



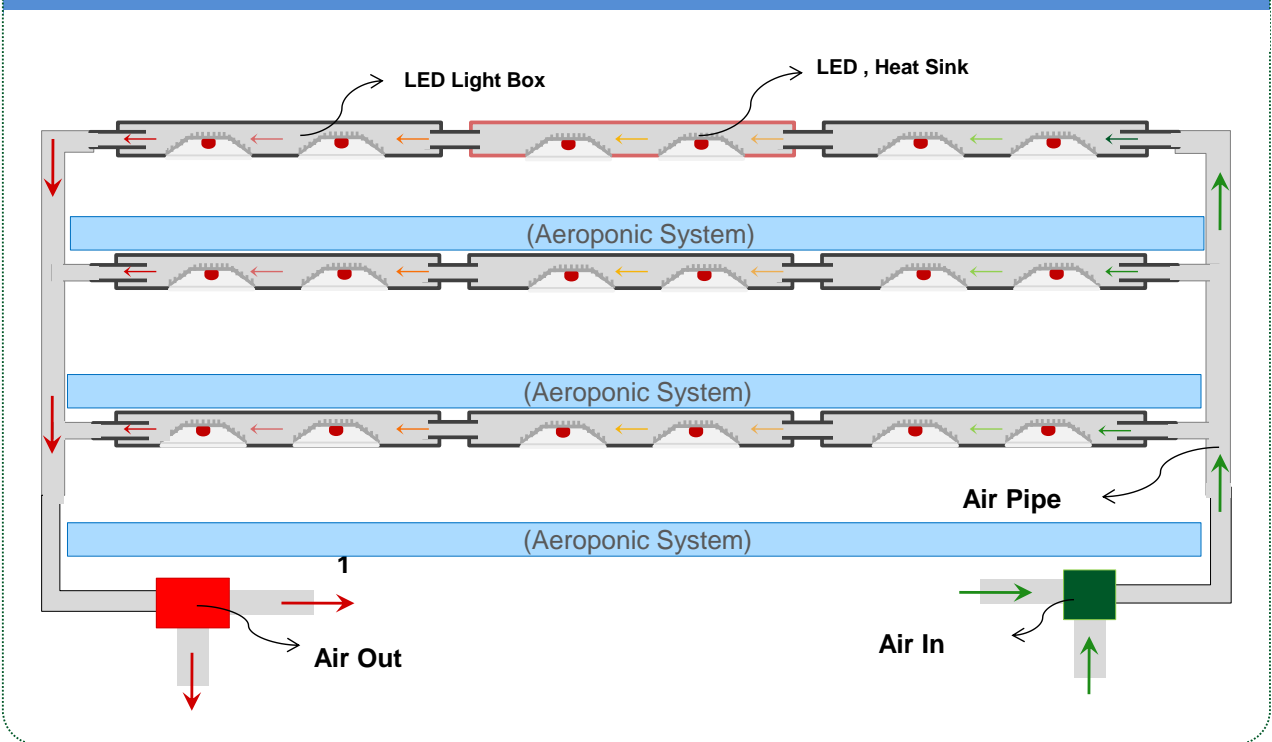
PARUS LED grow light

PGL-Box 75 Specification



Product	Model Name		PGL-BOX 75 (Plant Factory)
	System Power Consumption		120Watt
	Dimension(LxWxH)		1,200mm x 520mm x 48mm
	Packing(LxWxH)		1,250mm x 580mm x 98mm
	Weight		Approx 15kg
Power	AC input voltage range		Free voltage 90~245VAC, 50~60Hz
	SMPS mode (ballast)		DC Current Design(CC.CV Doul Mode)
	Protection		Short circuit, Overload, Over voltage
	Power Factor		Over 85%
LEDs	Ratio(R1:R2:B:0)		(11:3:4)
	Light source		Hi-Power 400mA LED- RB Control Mode
	Total number of LED's		54EA
	Used LED		3 Watt(wavelength, 430nm,450nm,640nm,660nm)
LED Control	Single, Group Local/Wireless Control		Single Dimming, Wireless Control Group Dimming, Wireless Control, Automatic PAR Dimming LED Wavelength, Dimming, Time, Pulse Contrl
Heat Sink	Heat Sink Type		Standard : Cooling by Fan Flow convention System Option : Water Cooling system
	FRAME Metrial	Body	Aluminium
		PCB	Metal PCB(aluminium)
		Heat conduction	2.0 w/m.k
	Thermal resistance	0.2 °C/w	
IP Class	IP55		
Efficiency	PPFD		250 umol m-2 s-1(measure the distance 200mm)
Pulse Wavelength	Pulse		400µs
	Duty rate		0-100%
Ambient Temperature	Storage Temp.		-30°C ~ 85°C
	Operation Temp.		~30°C
Angle	Lamp angle		120°
Life time			Over 50,000hr
Safety	Standard		CE, EMC, LVD
Warranty	3 year		(3 year)

Plant Factory System Structure



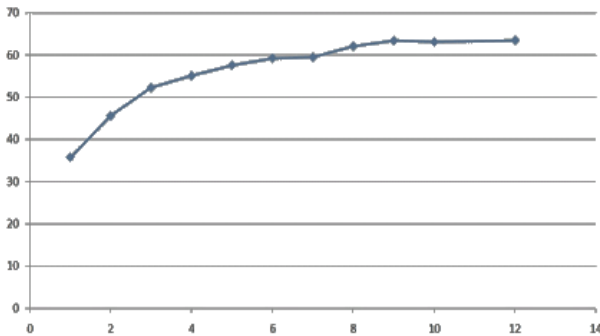
Before - Plant factory



Convection heat structure

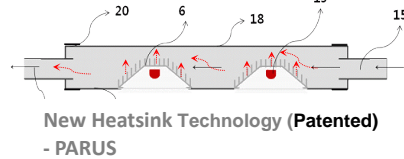


시간별 온도변화

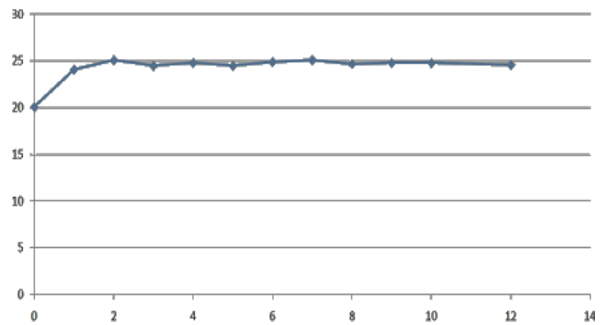


Temperature of the LED Grow light (Standard)

Improved Plant Factory



시간별 온도변화



Temperature of the LED Grow light (PARUS)

PARUS LED Grow light Wavelength

파장 특허 적용기술

